



BIRCH TRAIL RESORT
BED & BREAKFAST

Minocqua, WI - Retreat Center

Quilting Fiber Art Workshop – Instructor Lead by Wisconsin Awarded Toni Bergeon

Class Size 6-8 attendees, Workshop is 3 nights and 3 days

Workshop – Introduction/Beginners:

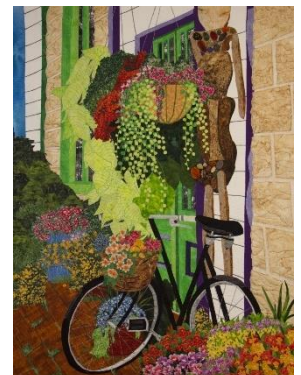
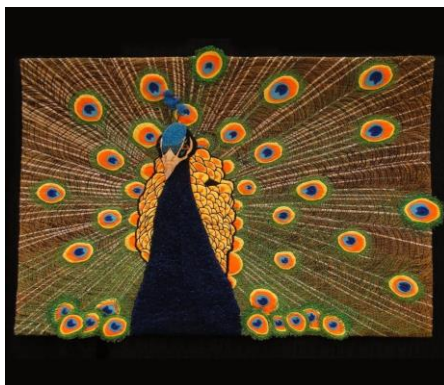
- Thursday 5/1/25 late afternoon and checking out on Sunday 5/4/25 12:00 noon

Workshop – Advanced II:

Thursday afternoon ladies get set up in the quilting workshop and settled in. Toni Bergeon will be there for a full trunk show and provide details about the days ahead. Beautiful lakefront cabins for sleeping accommodations. Gorgeous workshop with windows surrounded by a natural Northwoods wooded setting.



Some of Toni's work





Toni Bergeon, Fiber Artist Bio -

I consider myself a storyteller. My artwork is inspired by nature and a love of the outdoors and often based upon a photo I have taken. Growing up on a lake in northern Wisconsin triggered a life long passion for the colors and textures found in nature. The common threads in my art pieces are an attention to detail, a love of color,

depth and dimension. My love of traveling and taking photographs is a constant source of ideas for fabric wall art that hopefully reflects an appreciation of our natural world and provides joy to the viewer.

There are endless embellishments that add texture and interest; I especially love to use fabric ink pencils and pens, thread painting and

beadwork. Whether realistic or abstract, I hope my artwork encourages people to go outside and play.

As an award winning quilter, I am appreciative of the challenge of entering shows but find the most satisfaction in sharing techniques with others. I teach workshops in monoprinting, sun printing, landscapes, color, fusing and machine quilting. I have studied with a multitude of nationally known fiber artists and exhibit regularly with the fiber art group,

I am a member of Studio Art Quilters Association (SAQA), a national organization

Workshop Itinerary for Beginners Class

Afternoon arrival on Thursday - Meet and Greet along with a wonderful trunk show with Toni Bergeon

Day One—Friday: Color & Fusing Workshop

One-day class - Friday (9am-4pm);

What we cover on Day One:

How to select fabrics to make your quilts pop

How to use double sided fusible

How to create fused backgrounds for any applique or as stand-alone quilts

How to build a quilt from the backing to the top, quilting as you go, finished size 9" x 11"

Quilting Tips

How to select the right binding - four different options

Students will choose one of the three quilt options below:



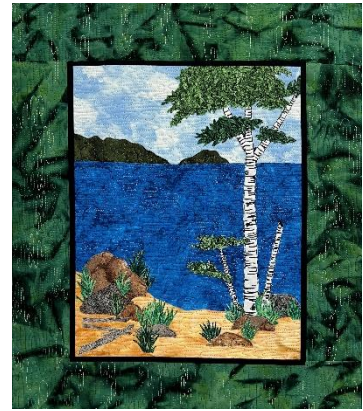
Morning will be spent learning about fusing, color choices, building a quilt from the backing to the top, and creating a background using fused strips.

Afternoon will be spent quilting the background, applying appliques, and learning about four binding styles.

Day Two— Saturday: Introduction to Landscape Quilting

Instruction in the morning; work or playtime or questions in the afternoon; Thirty-minute trunk show demonstrating some of the topics listed below.

This is an opportunity to translate a simple favorite landscape photo (something like a sunset or mountain view) into a wall quilt **OR** choose one of the quilts shown using techniques learned in the **Introduction to Color & Fusing Workshop**. Students taking this workshop and choosing to use one of their own photos, must email their photos to me in advance to make sure the photo will work for the skill level and timeframe of this workshop.



You will learn how to create realistic birch trees, add depth and dimension in your quilt, how to take a photo and translate it into fabric. You will get color and fabric selection tips, tips on keeping those quilts FLAT, information on needle and thread choices and more!

Supply List: Provided upon registration for class.

Day 3—Sunday Half-day workshop on Improving Your Machine Quilting. 9:00am to 12:00 noon

Get more comfortable with machine quilting! For the first hour, students will complete a machine quilting exercise (provided) and get some tips on improving machine quilting. The second hour, students will assemble a small table topper and spend the remaining time machine quilting the table topper, finishing it off with a tricolored satin stitch binding. Students will bring nine 5 1/2" batik squares, a 16" backing and batting, and basic sewing supplies. Familiarity with sewing machine required.





Accommodation Details and What to Bring

□ Each cabin can accommodate 3–4 ladies (if you have a group you can all be in one cabin, otherwise roommates will be assigned. Your cabin is immaculately clean with comfortable mattresses, fresh linens, fully equipped kitchen with full refrigerator, stove, microwave, coffee makers, and all dishes, pots and pans and serve ware. Bring – Bath towels, toiletry items.

- Cabins that are dedicated to this workshop – “The Minnow”, “White Pine” , White Tail and “Loon Loft” (more details can be found on our website: birchtrailresort.com)

□ Workshop has task and overhead lighting with no florescent bulbs, one wide ironing board, large cutting table, 8foot work tables with 2 per table, comfortable task chairs, side accessory tables, full refrigerator, dry bar with stools for eating area, soft seating sitting area with large screen tv—can play background music, movies, etc., bathroom, coin operated washer and dryer, and Wi-Fi.



□ Bring—food for breakfast, lunch, and dinner. Once we have roommates assigned, we will send the names and contact information to everyone – a popular coordination has been to get with class attendees before the start of the workshops and plan joint meals and dishes to pass.

Sewing machine and all accessories and tools you typically use when quilting.



Workshop Retreat Per Person Pricing:

Three nights four days, instructor lead classes (see program details above), sharing accommodations in 1 of our 3 cabins (see details on cabins above and in description of classes)

Options: Cabin 3 - White Pine - 3 bedrooms - 3 roommates; Cabin 1 - four roommates;
Cabin 5 Loon Loft - four roommates; Cabin 4 - White Tail - four roommates

\$ 545.64 includes

- occupancy and sales tax per person, (with roommates as listed above)
 - Daily instruction with Award Winning Artist Toni Bergeon
- 24-hour access to workshop with 8foot tables, chairs, task lamps, large cutting table, ironing station, restroom, large area for snacks and drinks (refrigerator), charge protector strips

Deposit: \$350.00 due at time of reservation. Remaining balance 30 days prior to retreat - Paypal - 3% or personal check.

Attendee Comments: "I do not have a creative bone in my body and with Toni's style of instruction I felt so comfortable and cannot believe the beautiful art I was able to create" LeAnne S.

"I had never heard of fiber art and now I am totally hooked! Coming back for the intermediate class!" Robin R.



"I so enjoyed meeting a whole new group of crafters and I hope to stay in touch with all of them. The cabins and resort grounds are amazing! I will be back" Debbie M.



Everyone is welcome, all you need is sewing machine experience for the introduction/beginner class – come with a group or by yourself.

Fiber Art Retreat - A Weekend for fun, community, creating, meeting new people, and learning in an incredible Northwoods location with an award-winning artist.

Dress is casual all weekend, bring a sweater for the workshop and boots just in case we have chilly wet weather.

Once we receive your deposit, supply lists will be sent over so you know exactly what to be collecting/buying/borrowing before the retreat.

We will also share your email and name so that you can coordinate a pot luck dinner and snack option with all attendees if you like.

A \$350.00 registration fee holds your spot/Balance due at the time of the retreat- cash or PayPal (3% fee) only at check in.

(If you cancel the weekend deposit is non-refundable, however transferable to someone for same dates)
(Cancellation two weeks or less before the event, full fee will not be returned)

Send registration fee – personal check, or work with Dawn Plankey (owner, retreat coordinator) , made out to Birch Trail Resort

Birch Trail Resort Retreat Center 8820 W. Amber Lake Road , Lac du Flambeau WI 54538
The Resort is located in Minocqua, post office is in Lac du Flambeau

For questions or more information contact Dawn Plankey – Dawn@birchtrailresort.com cell: 847-989-2587 Office: 715-588-1962

✂ _____

Please print clearly!

Name: _____ Email: _____

Address: _____

_____ Zip: _____

Phone Home: _____ Work: _____ Cell: _____

I would be interested in car pooling from _____ I would be driving and will take passengers

I will be rooming with _____ and _____ and _____ (if you already have room mates, if not we will assign), let us know which cabin is your favorite and then second choice, we will try to assign everyone to their favorite if possible. Cabin 1st Choice _____

Dates I am confirming _____ with Toni Bergeon Fiber Artist Retreat.
I approve having my email and name shared with other attendees to coordinate snacks and meals

Amount of Deposit: _____ Check No. _____ or call Dawn for PayPal